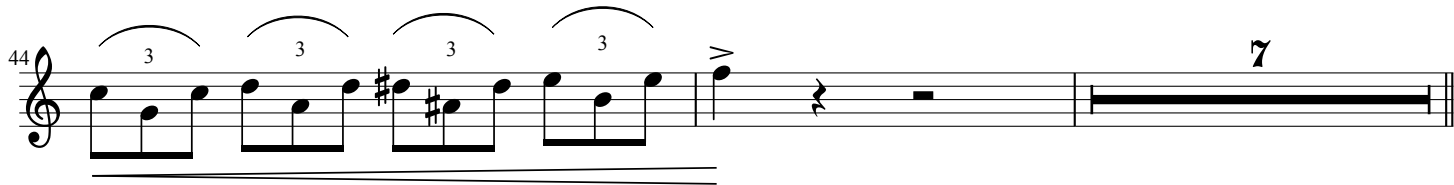


"Mister K. Is A-OK"

Soprano

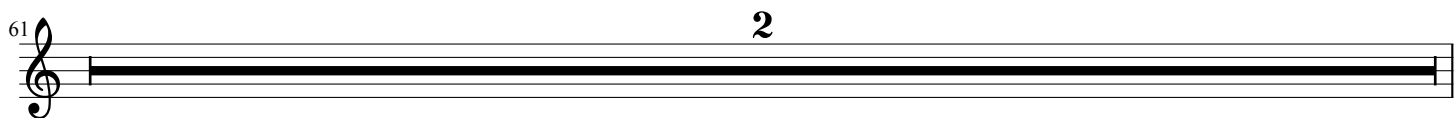
Comp/Arr Wendell Hobbs

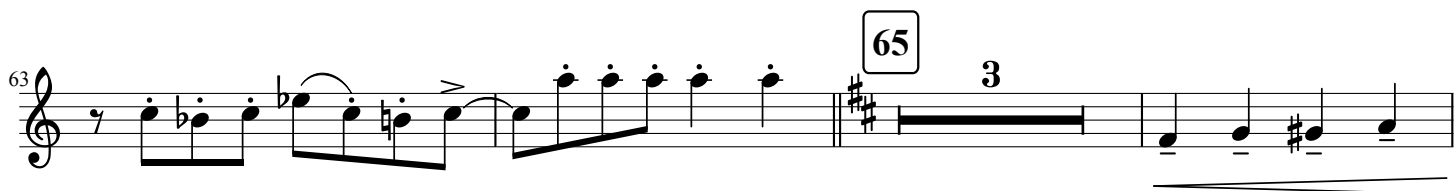
Medium Blues (♩ = 120)

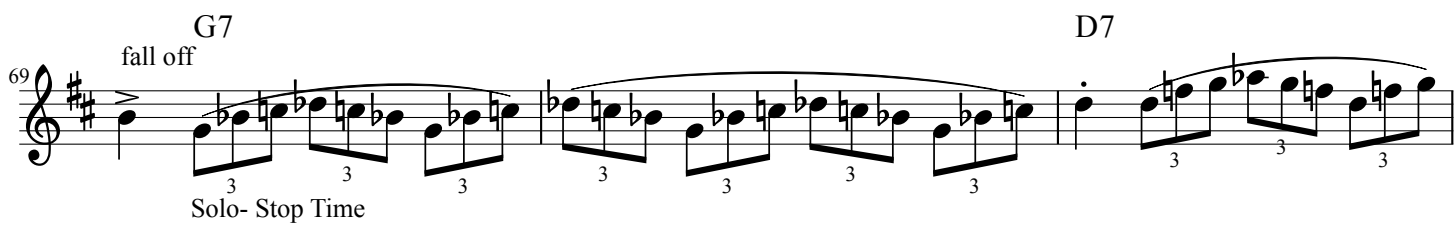
44 

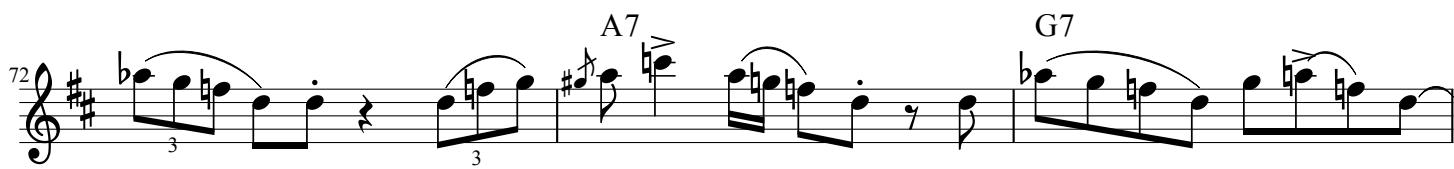
53 

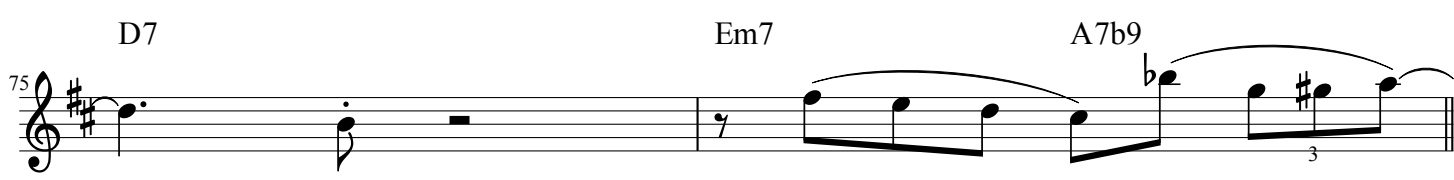
57 

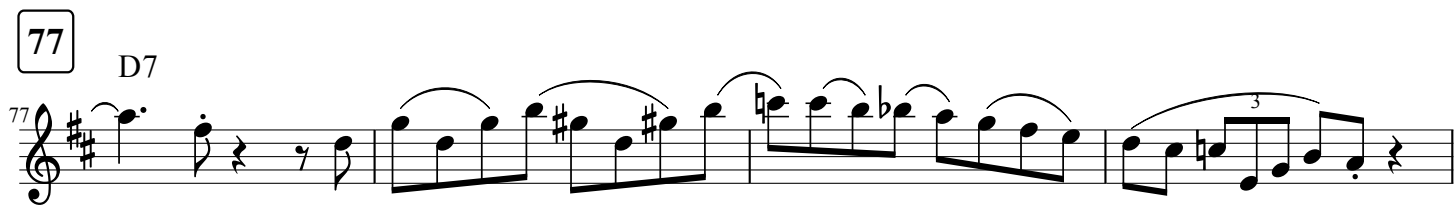
61 

63 

69 

72 

75 

77 

81 G7 D7₃

85 A7 G7 D7 F7 E7 E \flat 7 D7

89

89 2

94

98

101

101

105

105 8

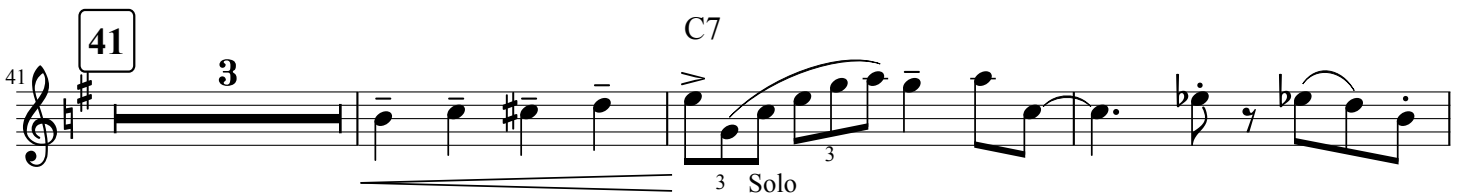
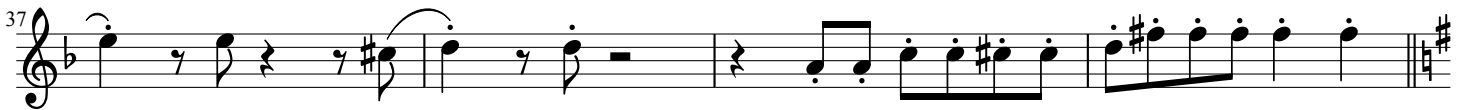
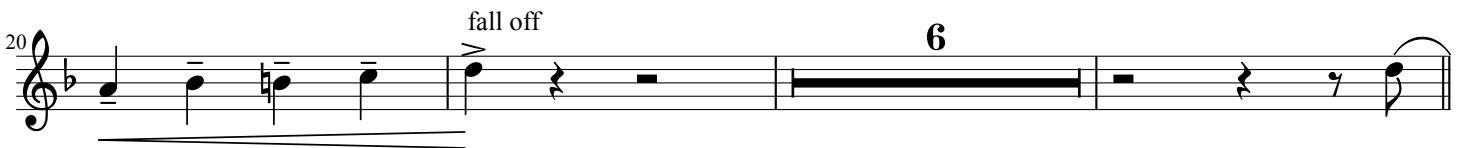
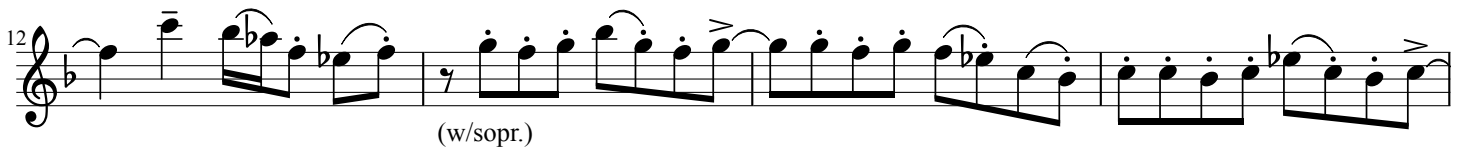
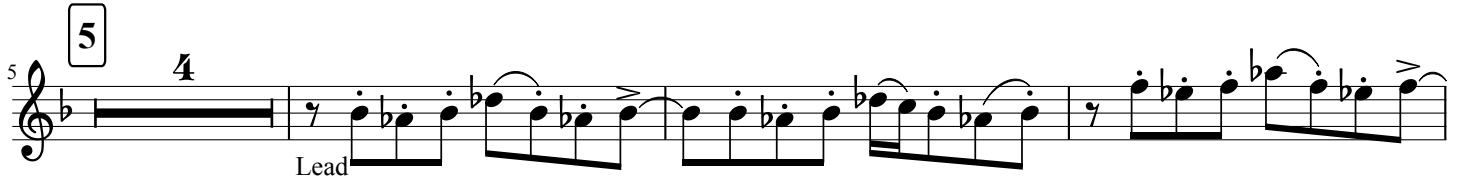
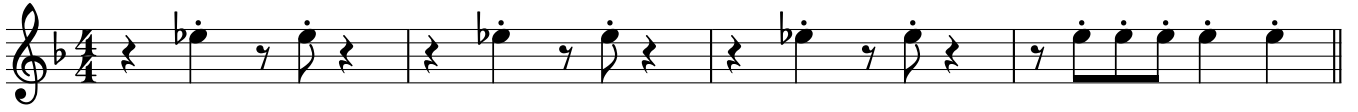
115

"Mister K. Is A-OK"

Alto

Comp/Arr Wendell Hobbs

Medium Blues (♩ = 120)



84

89

88

93

97

101

101

105

105

111

115

36 *F7* *Eb7* *Bb7*
As Written

40 **41**

43 **7**

53

57

61 **65**

66 *fall off*

70

74

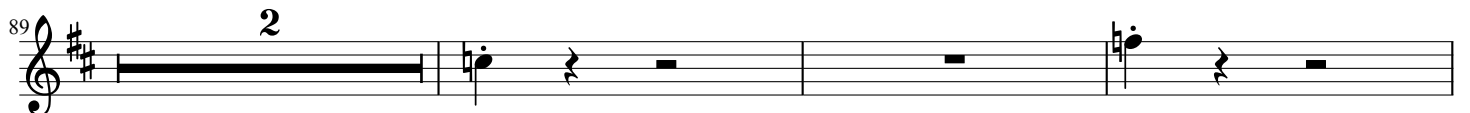
77

77

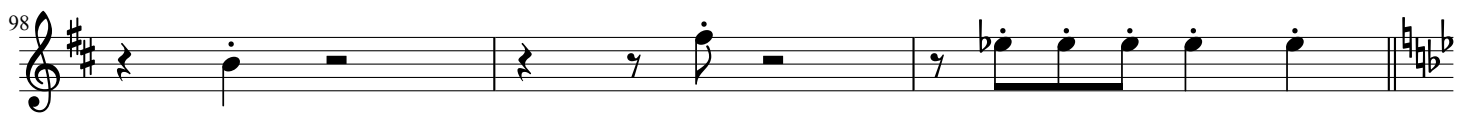
81 

85 

89

89 

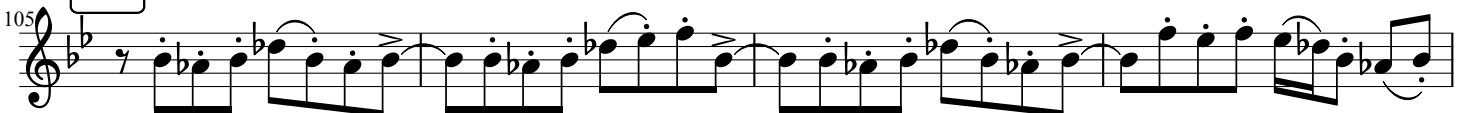
94 

98 

101

101 

105

105 

109 

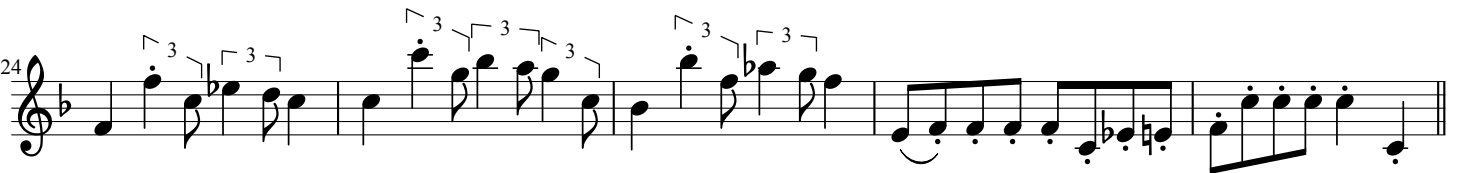
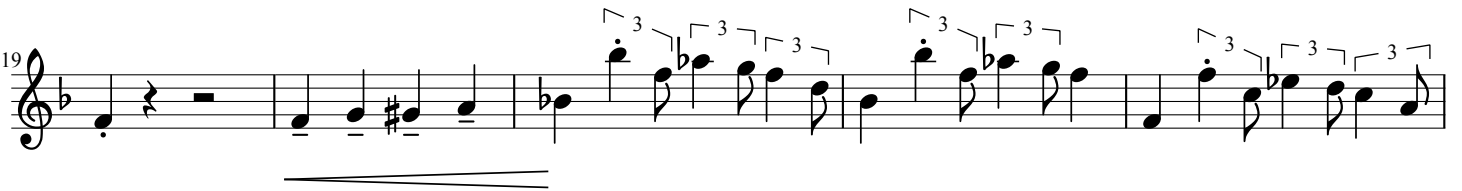
113 

"Mister K. Is A-OK"

Bari

Comp/Arr Wendell Hobbs

Medium Blues (♩ = 120)



39 41

44

49 53

54

59

63 65

68 *fall off*

77

73

78

83

89

A7

A7

88

Solo-Stop Time

93

95

99

As Written

103

108

113